



# SQD-Sky Wash

The safest, gondola-free wall-cleaning  
solution in the world



## Simple Installation

Quick, one-time installation within 1.5 hours



## Adaptive Features

Paired with a variety of high-quality cleaning tools and adaptable heads applying to different wall surfaces



## Time-Saving

+129% faster cleaning\*



## Minimal Cost

As workers do not engage in working at height, it can save the operational costs and insurance fee by max 75% \*



## Hazard Removal at Source

Gondola-free, minimize the workers to be engaged in working at height to eliminate hazard at the source

# Features

## Brushes and cleaning agents

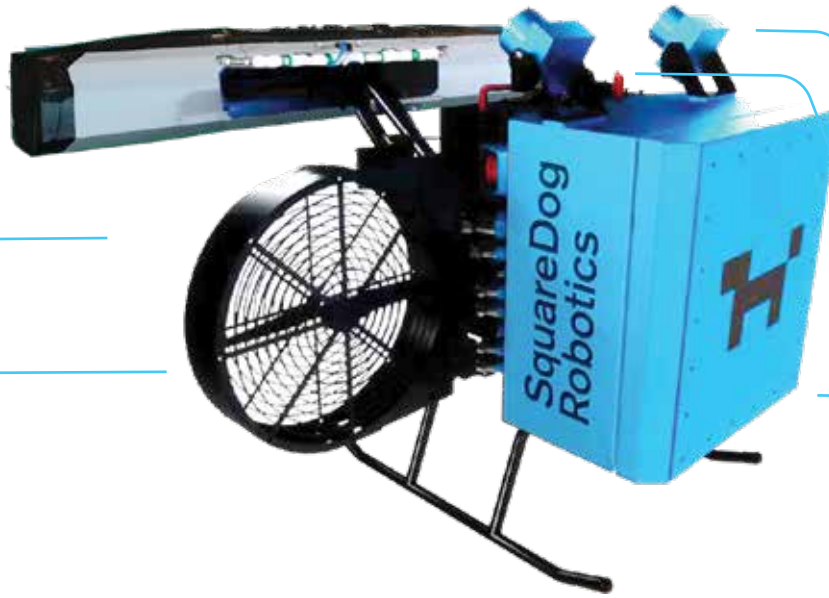
- Changeable according to wall materials
  - Rotating cleaning brush
  - Flat cleaning brush
  - Water jet

## Control mode

- Manual remote control
- Semi-auto mode

## Pair of propellers

- Auto stabilizing
- Auto adjusting distance between robot and wall



## Camera system

- 4 x Live HD wireless cameras

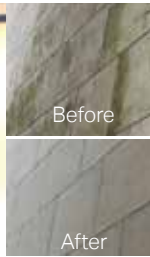
## Dual-wire system

- Stabilizing mechanism
- Robot able to move in all directions

## Safety features

- Anti-twining system
- Dual steel wire
- Remote emergency stop

# Job Reference



## Moss removal

@11 Plantation Road

## Glass façade cleaning

@The Mercedes-Benz Brand Centre

## Wall tile cleaning

@Skyline Tower



## Aluminium wall cleaning

@United Centre

## Glass façade cleaning

@The Belcher's

## Glass façade cleaning

@Nina Tower

# Specification

Size	1350 x 950 x 1100 mm
Operating height	180 m
Operating width	30 - 40 m
Net weight	73 kg
Maximum speed	8 metres / min
Rated power	2860 W, 13 A
Input voltage	220 V / 380 V
Ingression protection (IP) rating	IP 54
Steel wire specification	D 4.0 mm / 930 kg bearing load
Fall arrest system	Ø6mm steel wire x 2
Wireless remote control	LoRa
Wireless video transmit frequency	5.8 GHz
Featured cleaning tool	Rotating cleaning brush (Width: 1400mm)
Cleaning efficiency	5m <sup>2</sup> per minute

Singapore: BCA Braddell Campus, Blk E #08-61, 200 Braddell Road, SINGAPORE 579700  
 Hong Kong: Workshop A & B, 5/F, Hop Hing Industrial Building, 704 Castle Peak Road, Kowloon, HKSAR  
 Shenzhen: Room 3021, Peanut U Valley, 57 Guangda Road, Yuanshan Street, Longgang District, Shenzhen, CHINA

Singapore: +65 8283 8383  
 Hong Kong: +852 3613 0688  
 Shenzhen: +86 755 3390 8876

wa.me/+85253163854  
 @SquareDog Robotics  
 @squaredogrobotics

www.squaredogrobotics.com  
 Info@squaredogrobotics.com  
 @squaredogrobotics